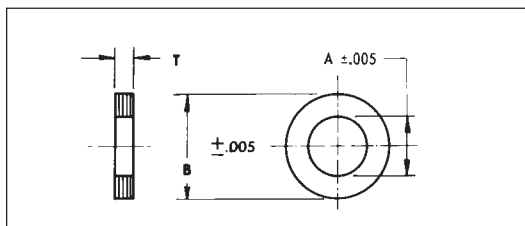


# LAMINATED BRASS SHIM SPACERS



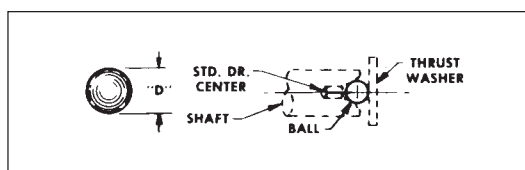
Material: Laminated Brass Shims (.002 Lamination)

Shaft Size	Type	A	B	T	Part No.
1/8	Outer Race	.312	.370	1/32	<b>B1-1</b>
3/16	Bearing	.375	.498		<b>B1-2</b>
1/4	Spacer	.437	.623		<b>B1-3</b>
3/8	(See Note)	.687	.873		<b>B1-4</b>
1/8	Shaft Spacer	.135	.234	1/32	<b>B2-1</b>
3/16		.193	.375		<b>B2-2</b>
1/4		.255	.500		<b>B2-3</b>
3/8		.380	.620		<b>B2-4</b>

NOTE: B1 SERIES OD TOLERANCE  $+.000$   
 $-.005$

## PRECISION BALLS — Inch and Metric

Stainless Steel & Nylon



Material: 440 Stainless Steel, Grade #25  
Hardened to RC55-60  
Sphericity .000025  
Zytel 101 Nylon  
Sphericity .001

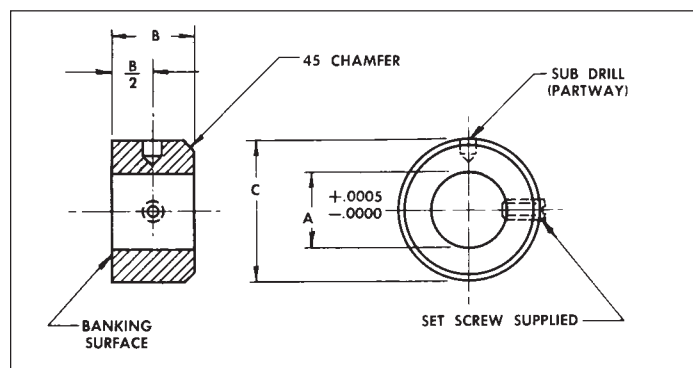
Nylon		Stainless Steel	
D	Part No.	D	Part No.
.0937	<b>AL-1</b>	.06250	<b>AK-1</b>
.1250	<b>AL-2</b>	.09375	<b>AK-2</b>
.1562	<b>AL-3</b>	.12500	<b>AK-3</b>
.1875	<b>AL-4</b>	.15625	<b>AK-4</b>
.2187	<b>AL-5</b>	.18750	<b>AK-5</b>
.2500	<b>AL-6</b>	.25000	<b>AK-6</b>
.3750	<b>AL-7</b>	.31250	<b>AK-7</b>
.5000	<b>AL-8</b>	.37500	<b>AK-8</b>
±.002		.50000	<b>AK-9</b>
		±.0001	

METRIC  
Stainless Steel

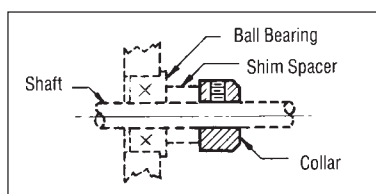
D	Part No.
1.5000	<b>MBL1-1</b>
2.5000	<b>MBL1-2</b>
3.0000	<b>MBL1-3</b>
4.0000	<b>MBL1-4</b>
5.0000	<b>MBL1-5</b>
6.0000	<b>MBL1-6</b>
±.0013	

All dimensions in Millimeters

## PRECISION SET SCREW COLLARS



Material: 303 Stainless Steel



Shaft Size	A	B	C	Set Screw	Part No.
3/32	.0935	.12	1/4	# 0-80	<b>C1-8</b>
1/8	.1248	.18	5/16	# 2-56	<b>C1-1</b>
5/32	.1560	.18	5/16	# 2-56	<b>C1-5</b>
3/16	.1873	.22	3/8	# 4-40	<b>C1-2</b>
1/4	.2498	.25	1/2	# 6-32	<b>C1-3</b>
5/16	.3123	.28	9/16	# 6-32	<b>C1-9</b>
3/8	.3748	.37	3/4	#10-32	<b>C1-10</b>
1/2	.4998	.50	1	1/4-20	<b>C1-11</b>

Dimensions Below Are In Millimeters

Shaft Size	A	B	C	Set Screw	Part No.
3	2.995	4.57	7.9	M2X.4	<b>MSC1-1</b>
4	3.995	5.59	9.5	M2X.4	<b>MSC1-2</b>
5	4.995	5.59	9.5	M3X.5	<b>MSC1-3</b>
6	5.995	6.35	12.7	M3X.5	<b>MSC1-4</b>
8	7.995	7.11	14.3	M3X.5	<b>MSC1-5</b>
10	9.995	9.4	19.1	M5X.8	<b>MSC1-6</b>
12	11.995	12.7	25.4	M6X.1	<b>MSC1-7</b>

Special Collars Available, Consult Factory.  
For "No-Mar" Set Screws See CS Series.